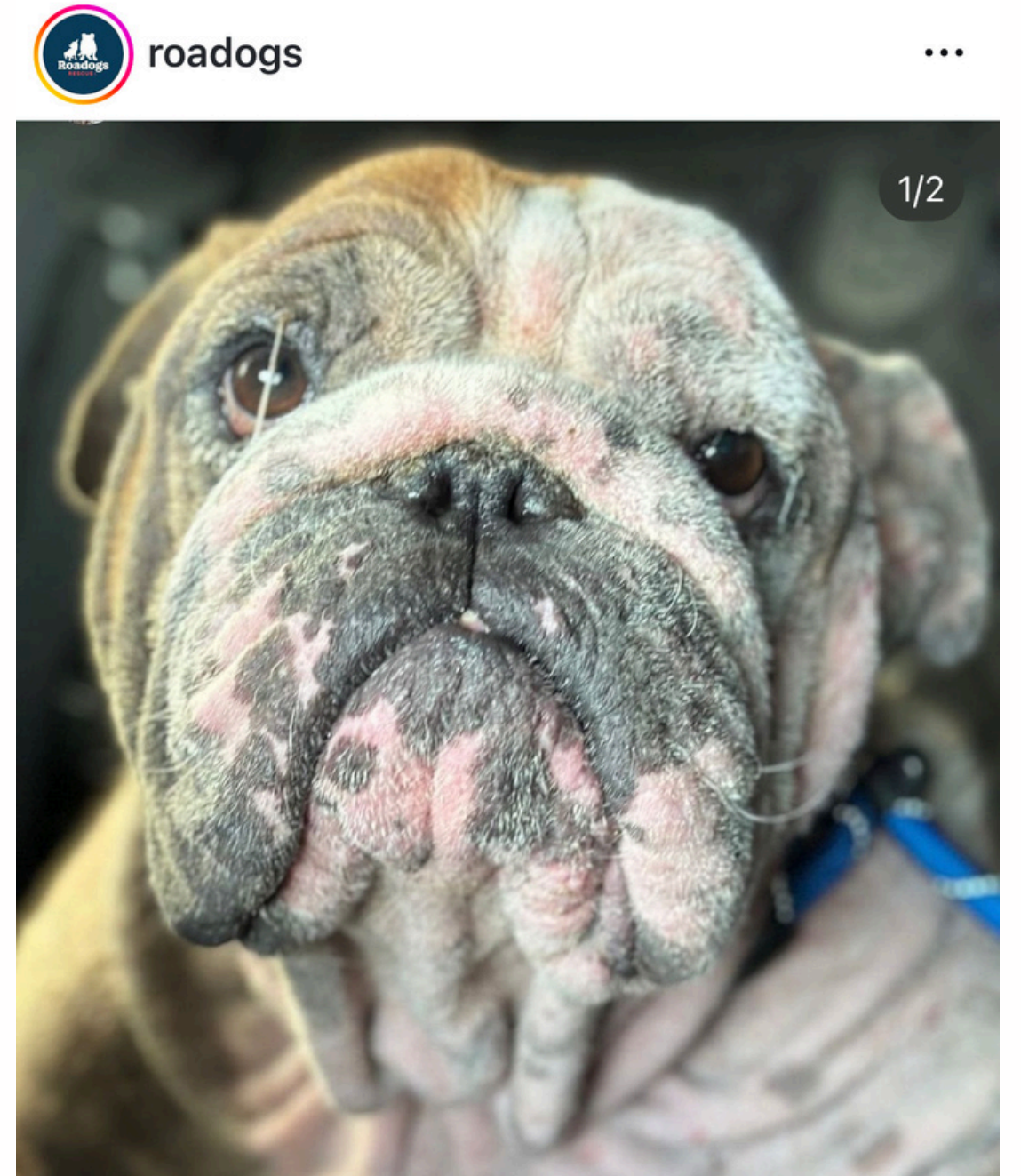




# Brachycephalic Syndrome



# What is Brachycephalic Syndrome?

**Pushed-in nose dogs** : Bulldogs, Frenchies, Pugs, Boston Terriers, ShiTzu, Lhasa Apso

## Congenital Defects

Elongated Soft Palate, Stenotic Nares, Cleft Palate, Hydrocephalus, Hypoplastic trachea, Limb deformities, Spina Bifida

**The results of these abnormalities:** Respiratory distress for the dogs, neurologic mobility issues

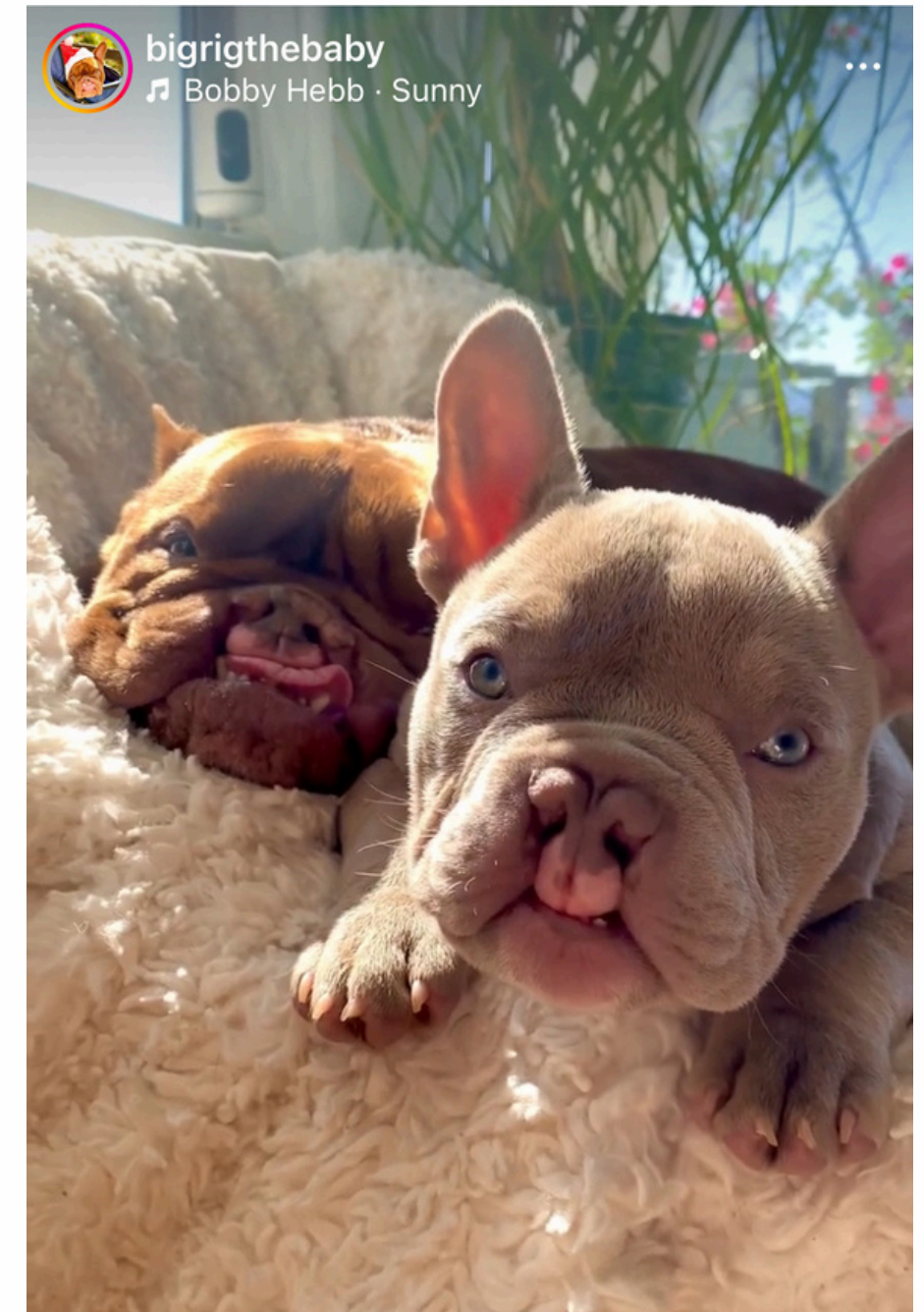
# How to prevent it/treat it?

## Prevent

- Stop breeding and buying flat faced brachycephalic dogs.
- Introduce dogs with longer noses, more open nostrils, and shorter soft palates into breeding lines to improve respiratory compromise.

## Treat

- Surgery to fix elongated soft palate, open up the stenotic nares, and to repair a cleft palate.
- Meds for hydrocephalus
- Palliative care for those that aren't treatable

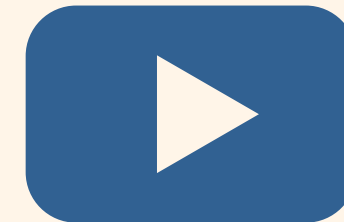


# Support for Parents of Dogs with Brachycephalic Syndrome



**Support**

Support groups found [HERE](#)



Check our Disabled Pets [YouTube Channel](#) for instructional videos

[www.disabledpets.org](http://www.disabledpets.org)

